



DIMENSIONS

Artwork should be created at actual output size (1:1 scale). Some banner sizes may have differing bleed requirements - see page 2 of this document for bleed measurements for the banner you have requested.

FILE FORMATS ACCEPTED

We accept Adobe Photoshop JPEG, Adobe Acrobat PDF or Adobe Illustrator EPS. We require banner resolution to be 150ppi at actual output size in CMYK colour mode. RGB is not acceptable. If files are supplied incorrectly client will be asked to fix and resupply corrected file.

PLEASE NOTE: Print Domain does not take responsibility if deadlines are not met due to supply of incorrect files - that is the file is not print ready and has to be resupplied.

FILE TYPES WE CANNOT ACCEPT

Please note that we cannot accept Indesign, Web Design Applications, Publisher, QuarkXpress, Corel-draw, Powerpoint, Excel or Word files. If you have artwork designed in these programs and are unable to output one of the file types listed above, you may need to have a designer recreate your files in a 'print-ready' file format.

FONTS

All fonts must be embedded or encapsulated. It is preferable that the fonts have been converted to outlines/curves. (This is compulsory if file is an EPS). Due to legal reasons, we are unable to install any fonts, that we are not licensed to own.

FILE NAMES

It is helpful if files are appropriately named. For example, a banner for John Smith Associates - 'JSmithbanner.pdf'.

COLOUR MANAGEMENT

All colour must be in CMYK mode.

- For rich black, please use 50% cyan, 25% Magenta, 25%, yellow, 100% black.
- If colour is of particular concern and a test print is required an extra charge will be added to overall cost of banner.
- Due to the difference between digital and offset printing, and the diversity of products we supply, certain PMS colours and effects such as duotones can sometimes be difficult to emulate therefore we do not guarantee exact colour matching will occur.

BLEEDS

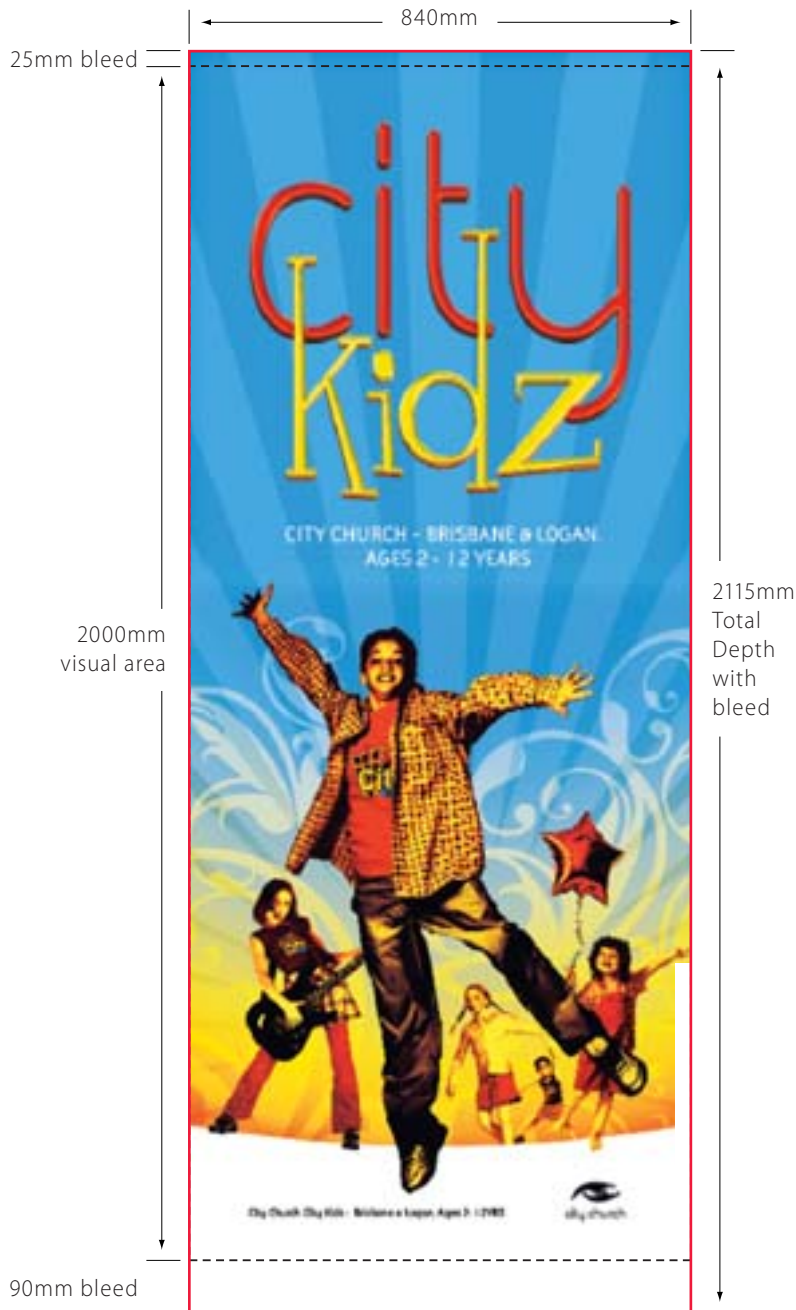
To ensure accurate sizing, additional bleed must be added to the image area. Please follow standard bleed according to our artwork specifications attached (Page 2)





printDOMAIN

PREMIUM POP UP BANNER BLEED SPECIFICATIONS



IMPORTANT

Print Domain recommends that the background image at the bottom should continue (ie. bleed fully) into the bottom and top of the non-visual area. That is, the image should not stop dead at the non-visual area edge.

VISUAL AREA DIMENSIONS -----
2000mm x 840mm

DIMENSIONS WITH BLEED ——
2115mm x 840mm*

*Your file must be supplied at these dimensions remembering that 90mm at the bottom and 25mm at the top will not be seen but the artwork still needs to bleed into these areas.

PLEASE NOTE

The width of the print is 10mm narrower than the width of the unit which houses the banner.

